

KURUME MUTUAL SUPPORT PLAN

Easy-to-Understand Edition



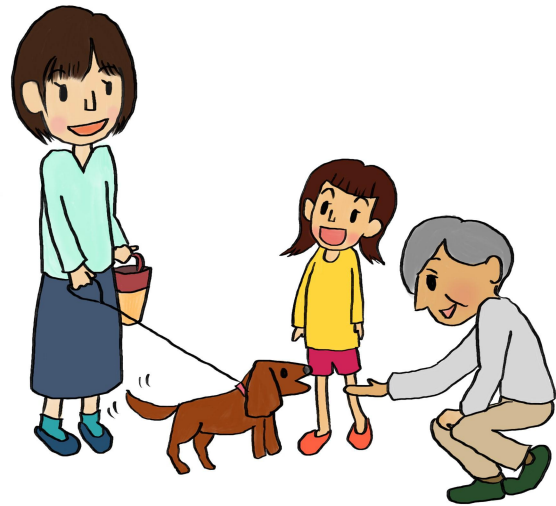
Community Welfare is to cooperate with all the people who live there to solve problems so that you can live in the community with peace of mind. We created this plan so that you can not only use welfare services, but also work with your neighbors, volunteers, and government officials to solve problems.

To realize "Kurume, a city with full of supporting hearts"

Kurume City Council of Social Welfare, and Kurume City will play their respective roles to achieve the goal with you.

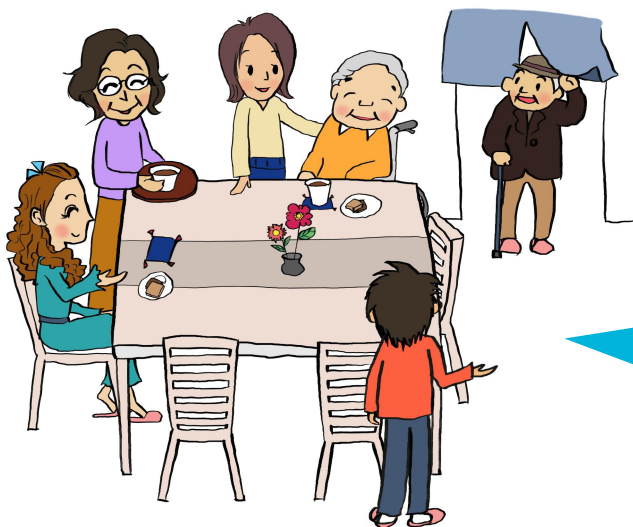
■ Make a connection

Greet people who live nearby regularly.



We will create opportunities for everyone to meet and talk.

■ Make more places where everyone can gather



Feel free to participate in gatherings.

We will help you create places where everyone can easily gather, and provide the information to various types of citizens.

■ Learn various community issues

Be aware that there are many people nearby, such as the elderly, children, and people with disabilities. When someone is in trouble, think together about what you can do.



We will provide consultation or guide for consulting services when in trouble.

■ Be prepared for disasters



Check your nearest designated evacuation site when a disaster occurs.

We will be ready to provide immediate assistance in the event of a disaster.

■Realize the community where everyone can live safely



If you are abused or notice someone is abused, don't hesitate to talk with someone you can trust and ask for help.

We will be prepared for immediate support and let everyone know where to consult.

■Learn community activities

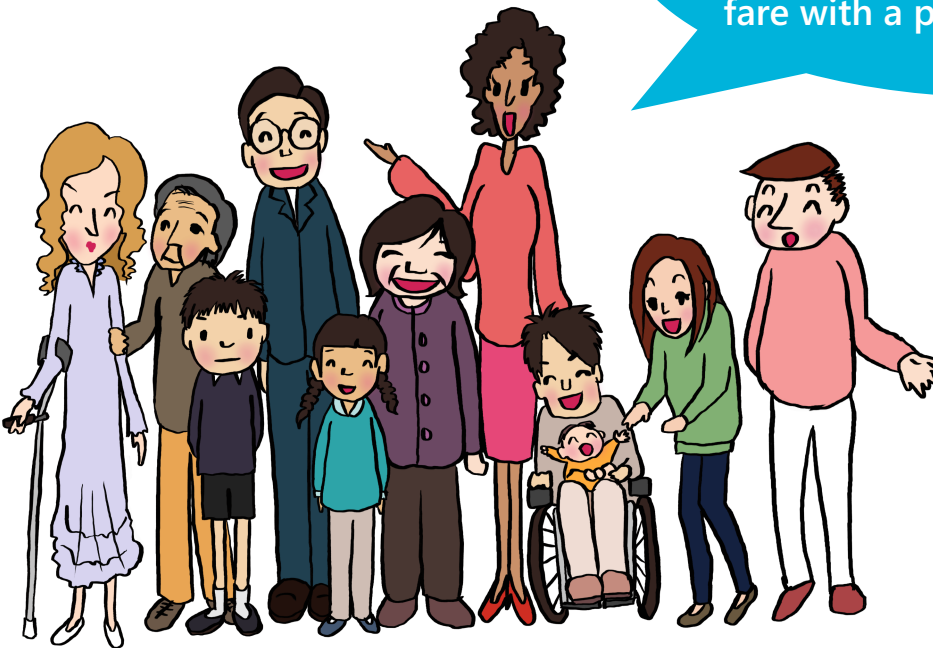
Actively take part in gatherings and events held where you live.



We will hold study sessions and make announcements to make it easier for everyone to participate in local activities.

■ Deepen understanding of welfare

Keep in mind that each person has different ways of thinking. Talk about human rights and welfare with a person close to you.



We will make everyone aware of the importance of living your life being yourself.

If you are in trouble, you can always consult us.

Counselors with various knowledge and experience will listen to your anxieties and worries and help you solve them.
Contact information is listed in the next page.

■ Consultation Services are available at the following places:

Consultation for people aged 65 or older



Consultation Office	Phone	Fax
Hiyoshi School District, Sasayama S.D., Nankun S.D., Shojima S.D., and Nagatoishi S.D. are Central Regional Comprehensive Support Center.	0942-46-8711	0942-34-7217
Kyomachi School District, Torikai S.D., and Kanamaru S.D. are Central 2nd Regional Comprehensive Support Center.	0942-27-6860	0942-27-6654
Nishikokubu School District and Higashikokubu S.D. are Central 3rd Regional Comprehensive Support Center.	0942-27-6886	0942-27-6874
Yamakawa School District, Yamamoto S.D., Zendoji S.D., Ohashi S.D., and Kusano S.D. are East Regional Comprehensive Support Center.	0942-41-5522	0942-47-2777
Funakoshi School District, Mizuwake S.D., Shibakari S.D., Kawai S.D., Takeno S.D., Mino S.D., and Tanushimaru S.D. are East 2nd Regional Comprehensive Support Center.	0943-72-8055	0943-72-0833
Jojima School District, Shimoda S.D., Aoki S.D., Egami S.D., Ukishima S.D., Inuzuka S.D., Nishimuta S.D., and Mizuma S.D. are West Regional Comprehensive Support Center.	0942-51-6100	0942-64-2082
Araki School District, Yasutake S.D., and Daizenji S.D. are West 2nd Regional Comprehensive Support Center.	0942-27-8569	0942-27-5958
Kamitsu School District, Seiho S.D., and Korauchi S.D. are South Regional Comprehensive Support Center.	0942-51-2332	0942-21-2103
Minami School District and Tsubuku S.D. are South 2nd Regional Comprehensive Support Center.	0942-36-5311	0942-36-5312
Kitano School District, Yuge S.D., Oki S.D., Kaneshima S.D., Komorino S.D., and Miyanojin S.D. are North Comprehensive Support Center.	0942-23-1055	0942-78-7255
Mii School District and Aikawa S.D. are North 2nd Regional Comprehensive Support Center.	0942-65-5156	0942-65-5305



Consultation about disability

Consultation Office	Phone	Fax
Funakoshi School District, Mizuwake S.D., Shibakari S.D., Kawai S.D., Takeno S.D., Mino S.D., Tanushimaru S.D., Yamakawa S.D., Yamamoto S.D., Kusano S.D., Ohashi S.D., and Zendoji S.D. are Eastern Core Consultation Support Center for Persons with Disabilities.	0943-73-0045	0943-73-0046
Jojima School District, Shimoda S.D., Aoki S.D., Egami S.D., Ukishima S.D., Inuzuka S.D., Mizuma S.D., Nishimuta S.D., Araki S.D., Yasutake S.D., and Daizenji S.D. are Western Core Consultation Support Center for Persons with Disabilities.	0942-27-2038	0942-27-2058
Minami School District, Tsubuku S.D., Kamitsu S.D., Seiho S.D., and Korauchi S.D. are Southern Core Consultation Support Center for Persons with Disabilities.	0942-51-8555	0942-22-2275
Nishikokubu School District, HigashiKokubu S.D., Shojima S.D., Hiyoshi S.D., Sasayama S.D., Nankun S.D., Nagatoishi S.D., Kyomachi S.D., Torikai S.D., Kanamaru S.D., Mii S.D., Aikawa S.D., Komorino S.D., Miyanojin S.D., Kitano S.D., Yuge S.D., Oki S.D., and Kaneshima S.D. are Northern Core Consultation Support Center for Persons with Disabilities.	0942-65-7855	0942-65-7844

Consultation on pregnancy and worries of children up to 18 years old



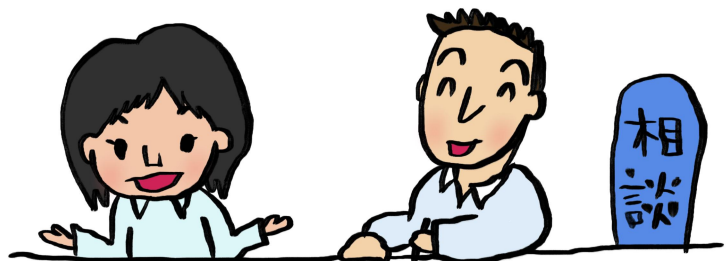
Consultation Office	Phone	Fax
Children and Child-rearing Support Center (for all areas of the city).	0942-30-9302	0942-30-9718

Consultation for people who are in financial trouble



Consultation Office	Phone	Fax
Hiyoshi School District, Sasayama S.D., Nankun S.D., Shojima S.D., Nagatoishi S.D., Kyomachi S.D., Torikai S.D., Kanamaru S.D., Nishikokubu S.D., Higashikokubu S.D., Jojima S.D., Shimoda S.D., Aoki S.D., Egami S.D., Ukishima S.D., Inuzuka S.D., Nishimuta S.D., Mizuma S.D., Araki S.D., Yasutake S.D., and Daizenji S.D. are Life Independence Support Center (for the western part of the city).	0942-30-9185	0942-30-9186
Yamakawa School District, Yamamoto S.D., Zendoji S.D., Ohashi S.D., Kusano S.D., Funakoshi S.D., Mizuwake S.D., Shibakari S.D., Kawai S.D., Takeno S.D., Mino S.D., Tanushimaru S.D., Kamitsu S.D., Seiho S.D., Korauchi S.D., Minami S.D., Tsubuku S.D., Kitano S.D., Yuge S.D., Oki S.D., Kaneshima S.D., Komorino S.D., Miyanojin S.D., Mii S.D., and Aikawa S.D. are Life Independence Support Center (for the eastern part of the city).	0942-30-9113	0942-30-9327

Consultation for people who do not know where to consult



Consultation Office	Phone	Fax
Kurume Multilingual Consultation Support Service.	0942-30-9096	0942-30-9711

The period of the plan is up to the 2025 fiscal year.
 Issued by Kurume City and the Kurume City Social Welfare Council in March 2020.
 Translation cooperation by English Club” INTRODUCE KURUME”